

THE FERRARI SPRING LOADED FIRE VALVE

THE FERRARI OIL FIRE VALVE HAS BEEN DESIGNED TO REPLACE THE OLD DEADWEIGHT TYPE VALVES.

1" AVAILABLE EX-STOCK

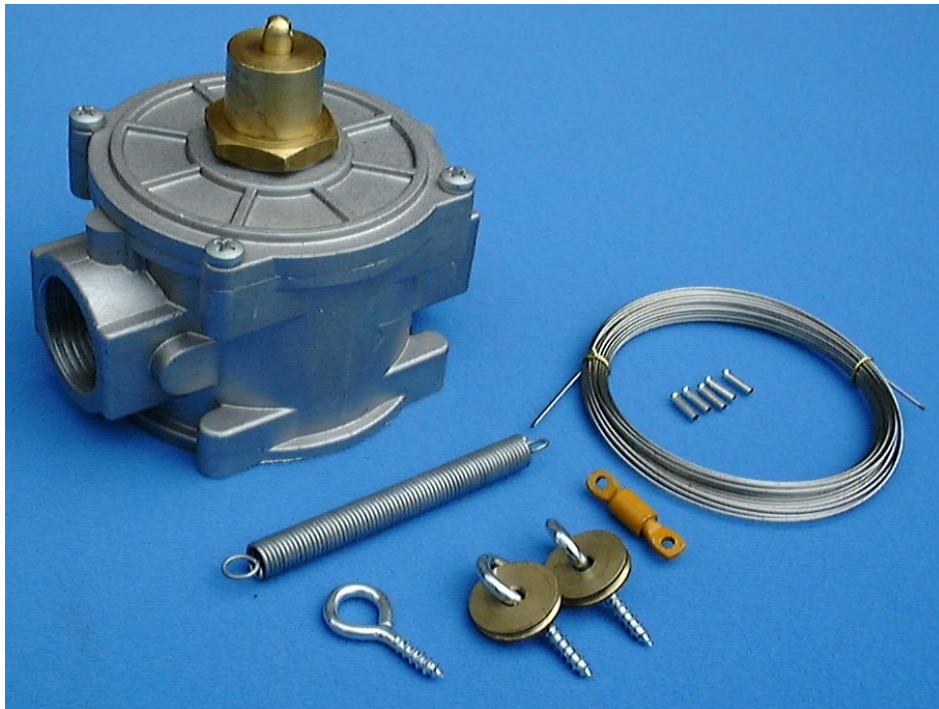
1 ¼", 1 ½" & 2" AVAILABLE UPON REQUEST

A FULL INSTALATION KIT IS INCLUDED COMPRISING OF:

1 x 9MTR COIL OF FIRE WIRE, 1 x 160 F FUSIBLE LINK, 1 x TENSION SPRING, 5 x CABLE CONNECTORS, 1 x ANCHOR EYE & 2 x PULLEYS.

TECHNICAL FEATURES

- DOUBLE VITON SEAL ON THE RESET SHAFT
- INSTANTANEOUS CLOSING OF VALVE
- MAX TEMPERATURE: 100° C
- MAX PRESSURE: 2 Bar

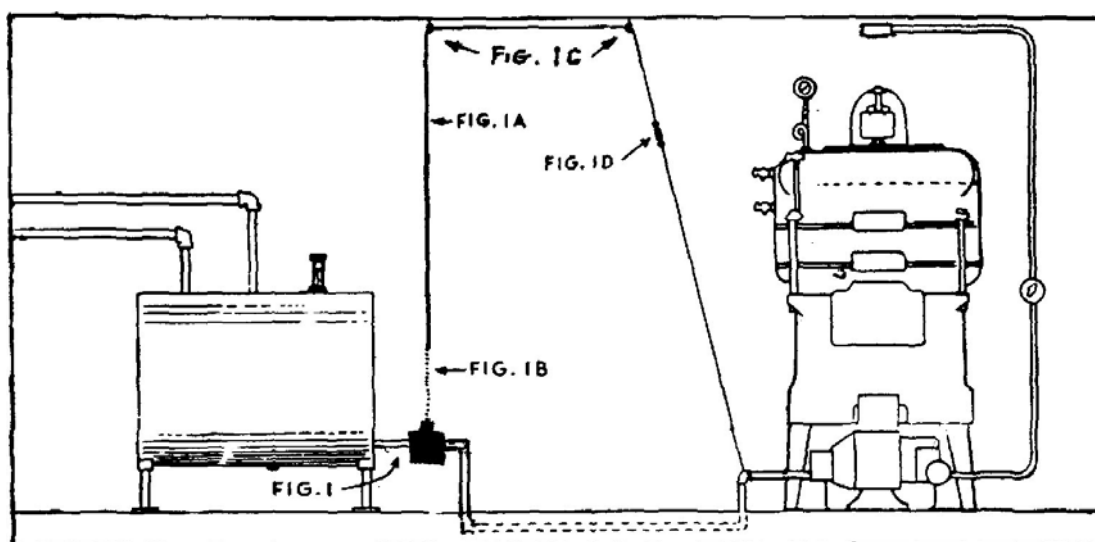


Anglo Nordic Burner Products
12-14 Island Farm Avenue
West Molesey
Surrey KT8 2UZ
Tel +44(0)20 8979 0988
Fax +44(0)20 8979 6961
Web Site: www.anglonordic.co.uk
e-mail: sales@anglonordic.co.uk

FERRARI SPRING LOADED FIREVALVE

INSTALLATION INSTRUCTIONS

- 1) ATTACH SPRING THROUGH LOOP AT THE TOP OF THE VALVE
- 2) ATTACH ONE END OF THE COIL OF WIRE TO THE SPRING AND ENSURE THE SPRING IS HELD TAUGHT SO THAT THE VALVE IS IN AN OPEN POSITION.
- 3) THE WIRE SHOULD THEN BE RUN ALONG THE WALL USING PULLEYS AND FIXING EYES AS APPLICABLE.
- 4) THE FUSIBLE LINKS SHOULD BE FITTED ABOVE THE BOILER OR IN ANY OTHER POSITION WHERE THE SENSING IS CRITICAL.
- 5) THE VALVE ITSELF SHOULD BE LOCATED AS CLOSE TO THE TANK AS POSSIBLE, PREFERABLY OUTSIDE THE BUILDING SO THAT IF A FIRE OCCURES THE VALVE SHUTS AND STOPS ANY MORE OIL ENTERING THE BUILDING.



- FIG 1 VALVE
FIG 1A TENSION WIRE
FIG 1B TENSION SPRING
FIG 1C PULLEY, 22mm WITH WOODSCREW
FIG 1D 155 F FUSIBLE LINK



Anglo Nordic Burner Products
12-14 Island Farm Avenue
West Molesey
Surrey KT8 2UZ
Tel +44(0)20 8979 0988
Fax +44(0)20 8979 6961
Web Site: www.anglonordic.co.uk
e-mail: sales@anglonordic.co.uk